

**Cebpd Antibody (Center)**  
**Affinity Purified Rabbit Polyclonal Antibody (Pab)**  
**Catalog # AP20492c**

---

**Specification**

**Cebpd Antibody (Center) - Product Information**

Application	WB,E
Primary Accession	<a href="#">P49716</a> , <a href="#">Q00322</a> , <a href="#">Q03484</a>
Reactivity	Human, Mouse, Rat
Host	Rabbit
Clonality	Polyclonal
Isotype	Rabbit IgG
Antigen Region	161-189

**Cebpd Antibody (Center) - Additional Information**

**Other Names**

CCAAT/enhancer-binding protein delta, C/EBP delta, Transcription factor CELF, Cebpd, Celf

**Target/Specificity**

This Cebpd antibody is generated from rabbits immunized with a KLH conjugated synthetic peptide between 161-189 amino acids from the Central region of rat Cebpd.

**Dilution**

WB~~1:1000

E~~Use at an assay dependent concentration.

**Format**

Purified polyclonal antibody supplied in PBS with 0.09% (W/V) sodium azide. This antibody is purified through a protein A column, followed by peptide affinity purification.

**Storage**

Maintain refrigerated at 2-8°C for up to 2 weeks. For long term storage store at -20°C in small aliquots to prevent freeze-thaw cycles.

**Precautions**

Cebpd Antibody (Center) is for research use only and not for use in diagnostic or therapeutic procedures.

**Cebpd Antibody (Center) - Protein Information**

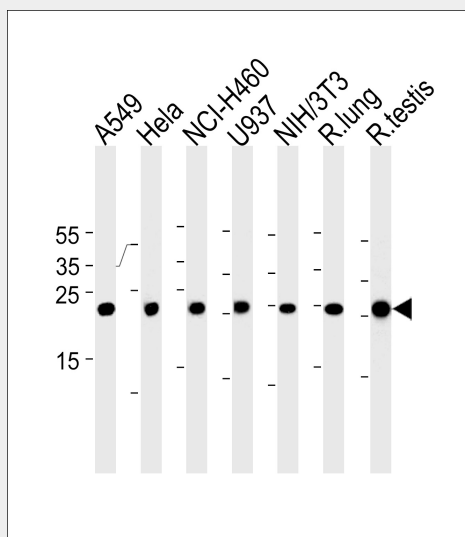
**Cebpd Antibody (Center) - Protocols**

Provided below are standard protocols that you may find useful for product applications.

- [Western Blot](#)

- [Blocking Peptides](#)
- [Dot Blot](#)
- [Immunohistochemistry](#)
- [Immunofluorescence](#)
- [Immunoprecipitation](#)
- [Flow Cytometry](#)
- [Cell Culture](#)

## Cebpd Antibody (Center) - Images



Cebpd Antibody (Center) (Cat. #AP20492c) western blot analysis in A549, HeLa, NCI-H460, U-937, mouse NIH/3T3 cell line and rat lung and testis tissue lysates (35ug/lane). This demonstrates the Cebpd antibody detected the Cebpd protein (arrow).

## Cebpd Antibody (Center) - Background

C/EBP is a DNA-binding protein that recognizes two different motifs: the CCAAT homology common to many promoters and the enhanced core homology common to many enhancers. Important transcriptional activator in the regulation of genes involved in immune and inflammatory responses, may play an important role in the regulation of the several genes associated with activation and/or differentiation of macrophages (By similarity).

## Cebpd Antibody (Center) - References

Kageyama R., et al. J. Biol. Chem. 266:15525-15531(1991).